

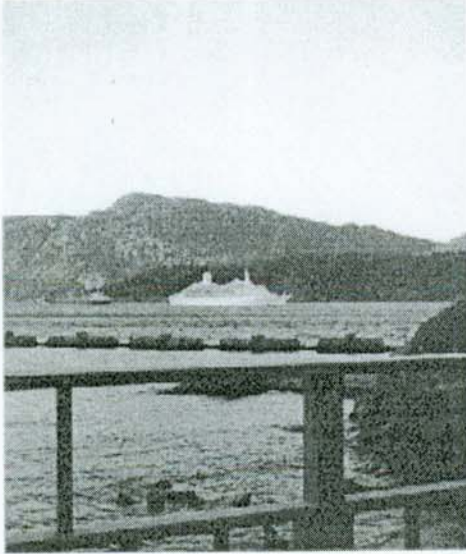
# Ripple Rock RV Park

*Your hosts, Pat and Val Ryan*

---

Unsurpassed Marine Scenery is the backdrop for this magnificent RV Park.

---



Ripple Rock is a full feature RV Park located in the heart of Vancouver Island's World Famous Salmon Country.

There's plenty to do at Ripple Rock RV Park. There's salmon fishing, of course, but that's not all! There are also horseshoe pits, indoor and outdoor shuffleboards, a smokehouse for your use, and a greenhouse for those who like to exercise their green thumbs. Our leisure facilities also include The Octagon Clubhouse, a spacious, fully furnished recreation building. Adjacent to the Octagon Clubhouse is the Indoor Hot Tub in its own enclosed building.

Other features you will find useful include a fishing pier with complete fish-cleaning facilities including weigh scales and a sink with running water. Ice, pop and bottled water are available as well. Over 100 cruise ships sail right past Ripple Rock RV on their way to Alaska and back. Our sixty concrete RV pads (16' by 40') offer 30 and 50 amp plug-ins PLUS hookups for telephone, 12 channel TV, water and sewer.

We are located at Brown's Bay, just a few minutes north of Campbell River, in the heart of the premiere Salmon Fishing grounds of Vancouver Island, British Columbia. To get to Campbell River, use our map to follow the Scenic Island Highway north from Victoria or Nanaimo, depending on which ferry you arrived on.

For reservations or more information, phone us at (250) 287-7108, fax us at (250) 286-1754, email us at [ripplerockrvpark@telus.net](mailto:ripplerockrvpark@telus.net), or mail us at Box 13, 15011 Browns Bay Rd., Campbell River, British Columbia, Canada V9H 1N9. For more great RV destinations on the mainland, visit [www.bcrv.com](http://www.bcrv.com)

---

Copyright © 2004 Ripple Rock RV Park  
last modified: June 3, 2004